

MLCO TRADING LIMITED

Service Re-Invented

PRODUCT & SERVICES CATALOGUE



Contact Details

Tel: + 260 966 512070

Website: <http://www.mlcotrading.com>

Email: admin@mlcotrading.com



MAIN LINE PRODUCTS & SERVICES

1. Company Profile
2. Layflat – Protan Ventilation Ducting and Seals
3. Spiral – Protan Spiral Ventilation Ducting
4. Catenary (Straining) Wire and Accessories (Engineering Wire Rope)
5. Steel Ventilation Pipes and Fittings
6. High Efficiency Ventilation Fans – Auxiliary and Surface
7. Wire Mesh Products – Welded Blast on Mining Mesh & Woven Mesh
8. Underground Roof Support – Split Sets, Cable Bolts and Roof Bolts
9. Alvenius Pipes , Alvenius Couplings, Bends, Tees and Fitting
10. LVC Mining and Industrial Valves
11. HDPE Pipes and Fittings
12. Mining & Industrial Hoses – Greenline and Goldline
13. Hose Fittings – WRE Fittings, Spuds, HoseTails
14. Safety / Rockfall Protection Netting
15. Earth Moving Spare Parts, Filters Etc
16. Locomotive Spares
17. Prefabricated Buildings, Design, Supply and Construct
18. Whipcheck Safety Slings
19. Pressure Equivalent Tables
20. Measurement Equivalent Tables





COMPANY PROFILE

MLCO Trading Limited was incorporated in Jan 2020 to provide quality, reliable, durable and efficient branded products and services within the Mining and Industrial Industry in Zambia and The Democratic Republic of Congo.

Vision Statement:

'MLCO Trading Limited Ltd is placed to become the leading supplier within its field of Supply and Service. We aim to gain recognition over Zambia and the Democratic Republic of Congo, as a provider of quality customer specific products that can be relied upon.'

Corporate & Technical Attributes:

- MLCO Trading Ltd provides a professional service, by making available to customers reliable, durable, competitively priced and efficient branded products.
- MLCO Trading Ltd, only provides quality tested products which carry the International Standards Certification providing you with a peace of mind that the products have been tried and tested and approved for mining use.
- MLCO Trading Ltd ensures value for its customers by creating strong relationships through providing of a consistently reliable service and remaining competitive within the market place.
- MLCO Trading Ltd creates value for employees by providing a balanced reward structure, competitive remuneration, and sales commission recognition for value contribution, career progression opportunities and development. This ensures the realisation of each individual's potential, in the best interest of the company and the individual employee.

We currently supply and contract to the following companies:

- Mopani Copper Mines Plc
- First Quantum Minerals Ltd
- Konkola Copper Mines Plc
- Albidon Zambia Ltd, Mazabuka
- Tenke Fungurmi S.P.R.L
- Kamoto Operating Limited, DRC, SARL
- Mutanda Mining S.P.R.L
- Kamoia Copper Mine SARL
- Luanshya Consolidated Copper Mine Plc
- Chibuluma Mine
- NFCA Africa Mining (Pty) Limited
- JCHX Mining & Construction Limited
- Lubambe Copper Mine Limited
- Kinsenda Copper Company SARL
- Murray and Roberts Zambia Edition
- Redpath Zambia Limited
- Golden Star – Wass and Prestea Mines, Ghana
- Shanta Mining Company, Tanzania
- Kamoia Copper Company SARL





LAYFLAT - VENTILATION DUCTING AND VENTILATION SEALS

PROTAN VENTIFLEX - Flexible Ducting and Accessories



Ventiflex ducting is manufactured in Drammen, Norway from vinyl coated scrim and is delivered to fit different service requirements. Standard lengths are 10m, 15m and 20m. Non standard lengths can be assembled to suit in our warehouse in Kitwe, Zambia. Standard diameters range from 200mm to 1400mm depending on the client's needs.

PRODUCT INFO

All seams are welded. One end of the tube is fitted with a steel coupling ring. The ring is also fastened by means of welding as in the longitudinal rib which is equipped with eyelets for fastening of the hangers. The hanger consists of a double hook with a galvanised steel thread. The hook is the weakest joint and straightens out in case of an overload. Each tube is marked as follows; Manufacturers Name, Quality, Designation, Diameter, Production Year, Week and Day.

VENTIFLEX ACCESSORIES

- Hooks (Various Steel Hooks for different uses)
- Grommets (Reinforced PVC grommets in the same material as the textile)
- Soft Couplings (Safe, Reliable, easy to install and separate)
- Zip Couplings
- Steel Couplings (LP Coupling / VF Coupling)

VENTILATION SEALS



MLCO Trading Limited has recently undertaken the task of supplying and constructing Ventilation seals on the Mines in Zambia. We offer a temporary (*Protan*) or permanent (*Vent Flex*) ventilation seal which is quick to construct and able to withstand the harshest of environments underground. Please contact our sales team if you require further information.



PROTAN SPIRAL VENTILATION DUCTING

A comprehensive range of collapsible pipes for forced and exhaust application with associated range of fittings and accessories

- Modular design
- Established mining standard
- External wire reinforced for exhaust at pitches of 50, 75 and 150mm
- Materials : PVC 670 and 750gsm
- Diameters ranging from 305, 830, 410, 550, 570, 610, 760 , 915, 1015, 1220, 1350 and 1800mm
- Product testing to :
 - Flammability - NCB 246:1985
 - Electrical resistance - S ABS 1267 T
 - Toxicity - Naval Eng Std 713

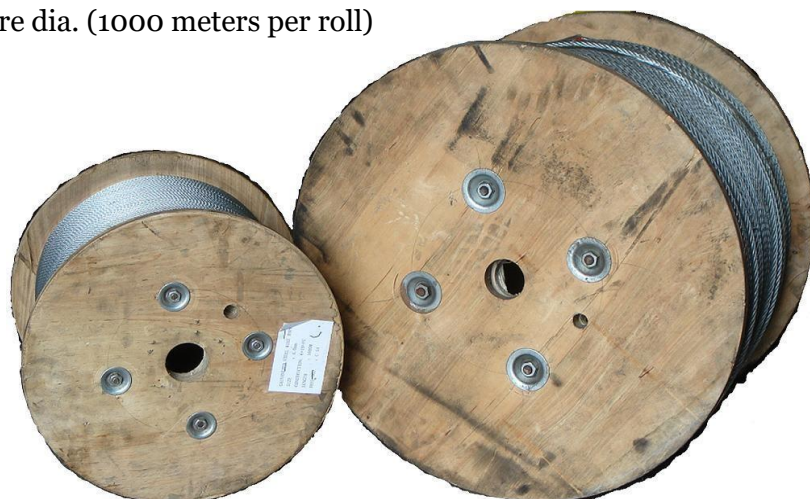




WIRE ROPE - CARTENERY (STRAINING) WIRE

AVAILABLE IN

4mm, 6mm, 8mm, 10mm or 13mm wire dia. (1000 meters per roll)



TECHNICAL SPECIFICATIONS

4mm Galvanized Steel Wire:

Construction:	6x19+FC
Finished Diameter (mm)	4.04 - 4.16
Tensile Strength (N/mm ²)	2050 - 2140
Breaking Strength (kN)	11.21 - 12.29

8mm Galvanized Steel Wire:

Construction:	6x19+FC
Finished Diameter (mm)	8.10 - 8.24
Tensile Strength (N/mm ²)	1900 - 2090
Breaking Strength (kN)	41.1 - 42.2



We also offer a wide range of fixing shackles if you prefer not to use the hanging hooks provided with the ventilation ducting. Please contact us for details and prices.



STEEL VENTILATION PIPES, SILENCERS AND FITTING

MLCO Trading is supplying the mining industry with conventional steel ventilation pipes and a new Enerduct. The Enerduct is a new concept of ducting design and manufacturing. CFD simulation and analysis of air flow on the newly spiral-swage formed ventilation ducting were conducted by the CSIR institute to determine the flow characteristics in the Enerduct pipe. Results from the simulation research proved that the design of the spiral swage reduces friction pressure drop by between 8.80% and 13.04% at different flow rates compared to conventional steel ducting.

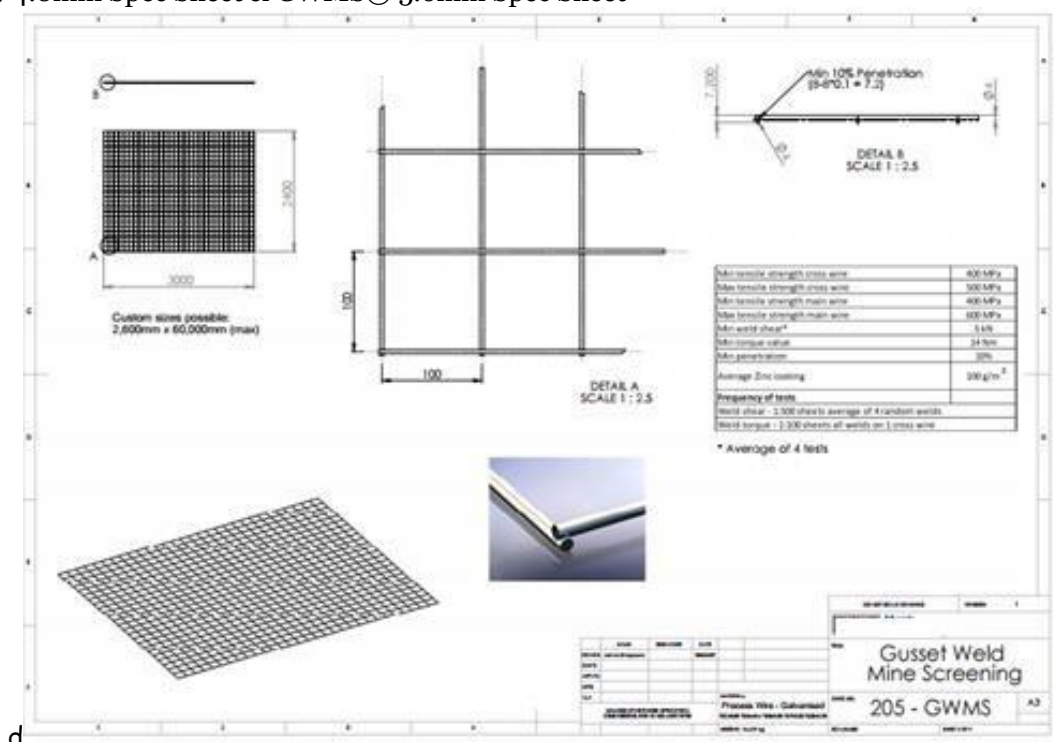




WIRE MESH – BLAST ON MESH AND WOOVEN MESH

Gusset Weld Mine Screening (GWMS®) is produced to the highest mining quality standards to provide a cost effective method of rock support and strata control. Supplied locally and throughout Africa, Gusset Weld Mine Screening (GWMS®) is providing a safer working environment for underground miners. With a weld shear force exceeding 10 kN, GWMS® can withstand blasting at the face, continuing to reduce rock falls and enhance safety after such a blast. GWMS® is quick and easy to install, is not a fire hazard and is very durable with little, if any, maintenance required.

GWMS® 4.0mm Spec Sheet & GWMS® 5.6mm Spec Sheet



SABS
 Permit to Apply Certification Mark

Issued in the province of the Director Act 1992
 1st Dec 2012. An interim regulation made pursuant to the conditions
 outlined in the operational conditions of permit holder

**BRC MESH
 REINFORCING (PTY) LTD
 VEREENIGING**

to apply the certification mark

**SABS
 APPROVED**

In respect of the mark specification:

**SANS 1024:2006
 TO: WELDED STEEL FABRIC FOR
 REINFORCEMENT OF CONCRETE**

This permit, including schedules 1 to 3 which form an integral part hereof:
 - is issued on condition
 - is identified by the applicable permit number
 - is subject to the condition of transfer of ownership
 - is valid subject to ongoing compliance with permit conditions and
 - bears the approval of the Department of Trade and Industry
 of the state, the permit and the product.

Permit Number: 4524/6435
 Effective Date: 25 February 2009
 Expiry Date: 25 February 2012
 Date of Original Issuance: 5 March 1992
 Issued: *Martin Kusaus*

SABS
 SOUTH AFRICAN BUREAU OF STANDARDS

SABS COMMERCIAL (PTY) LTD
 100 WATERLOO ROAD, SANDHURST, 7690

IAP

SA 4049



UNDERGROUND ROOF SUPPORT – SPLIT SETS, CABLE BOLTS

MLCO Trading Limited provides underground mining support split sets which are manufactured by the industry leaders in South Africa.

Roof support is mainly used in underground applications in mines, tunnels, slopes, or wherever reliable ground support is needed. Our friction rock bolts produce superior holding power due to their unique design that exerts pressure against the rock over its full contact length immediately upon installation. When ground shift occurs, our rock bolts conform to the changing ground conditions. The result is a tight grip that actually grows stronger with time and ground movements, providing reliable ground support. Friction Bolts never needs tightening.

Our Friction rock bolt stabilisers are a simple system requiring only two parts a tube and bearing plate. Fast, easy installation takes usually less than a minute - just drill and drive. Split Set® stabilizers come in 3 models. They are available in lengths and sizes to meet your needs and are made of standard, galvanized, or stainless steel.



Photos of current stock at MLCO Store in Kitwe, Zambia

Minimum Stock kept of 20,000 off 2.4m x 46mm diameter

Combi Washers

Domed Washers 150x150x4.5mm

Domed Washers 300x300x4.5mm

OSRO STRAPS





ALVENIUS PIPES, COUPLINGS AND FITTINGS

MLCO Trading Ltd, is the exclusive Agent for Alvenius Pipes in Zambia and currently holds all the available diameters and lengths in their steel range.

Alvenius's vision is to further establish themselves as a leading manufacturer of steel pipe systems within the mining industry, civil engineering, and industrial industry. Alvenius has delivered hot dipped galvanised pipe systems for over 50 years in both temporary and permanent applications.

The Alvenius objective is to supply products and services of such quality that they will fully conform to the demands and expectations of our customers and authorities.

Regular X-Ray Control takes place and all pipes undergo visual inspection as well as hydrostatic tests at 1.5 times their working pressure. The quality management system is certified according to ISO 9001 by Lloyds Register.

BENEFITS OF ALVENIUS PIPES:

- Economical
- Easy Assembly
- Considerable Reliability
- Flexibility & Versatility
- Long Life
- Complete System
- Tight Tolerances
- Ability to use K10 Victaulic Couplings



Please contact our office if you require the technical data brochure or more information on Alvenius pipes



LVC MINING AND INDUSTRIAL VALVES

Lined Valve Company, Inc designs and manufactures knife gate valves. LVC is based in Woodland, Washington, USA, with manufacturing plants in Washington and Florida.

MLCO Trading Ltd, Kitwe, Zambia is the Agents for LVC and hold the following valve in various sizes at our Warehouse in Kitwe.



FEATURES

- **HEAVY DUTY** cast ductile iron body, bonnet, gate and hand wheel.
- **Fusion Bonded Powder Coating** on all interior and exterior surfaces.
- **Alvenius K10 Coupling** end connections.
- **16 Bar** design pressure.
- **EPDM Resilient Seat** for bi directional drip tight shut off.
- **Non-rising stem** hand wheel operated.
- **Brass Stem bushing** with EPDM stem seal and backseat provides reduced operating torque.
- **EPDM top stem seal** to keep dust and debris from working in between stem and bushing.
- Precision compression molded gate seat for superior seating capability
- **Seat seals FLUSH** on bottom ID of body eliminating any pockets in the bottom of the valve to collect particles in the pipeline.
- **Stainless Steel stem** for corrosion resistance.
- **Tested to 24 bar** for body and bonnet hydrostatic test.
- **Tested to 17.6 bar** for gate integrity and seat leakage.
- Available in sizes **48mm through 203mm**.
- **Typical Applications:**
 - **Portable Water** - **Mining**
 - **Waste Water** - **Tunneling**
 - **Food Processing** - **Power**
 - **Cooling Water** - **Process Piping**
 - **Compressed Air Lines**
 - **Fire Protection Systems**
 - **Pumped Drainage Systems**

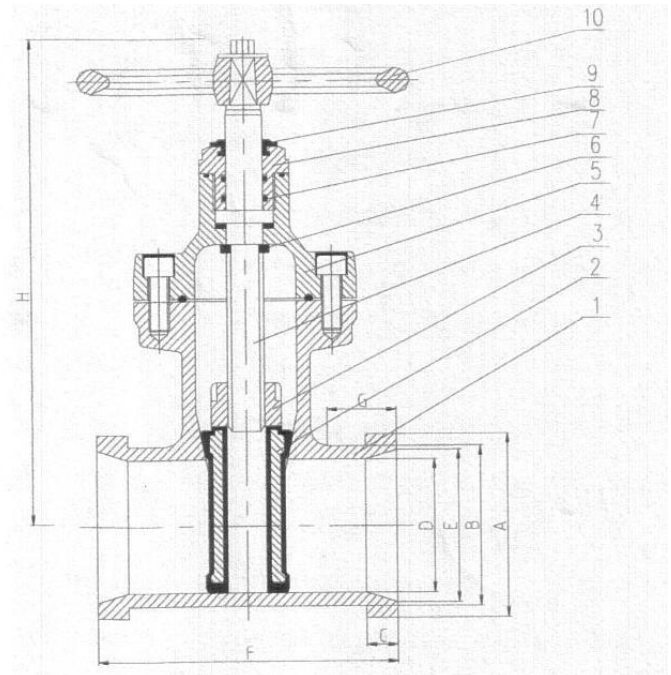


LINED VALVE COMPANY, INC.

DUCTILE IRON RESILIENT SEAT GATE VALVE



MATERIALS OF CONSTRUCTION	
No & Name	Material
1 BODY	Ductile Iron
2 GATE **	Ductile Iron/EPDM
3 STEM NUT	Brass
4 STEM	Stainless Steel
5 BONNET*	Ductile Iron
6 BACK SEAT	EPDM
7 STEM SEAL	EPDM
8 GLAND	Brass
9 STEM SEAL	EPDM
10 HANDWHEEL	Ductile Iron



* Body Bonnet and Hand wheel are ductile Iron with a fusion bonded powder coating on all surfaces.

** Gate is ductile Iron with an EPDM Liner on all surfaces.

DIMENSIONS (mm)

SIZE	48	60	76	102	152	203
A	52	64	83	108	161	216.5
B	48.3	60.3	76.1	101.6	152.4	203
C	12.5	13	13	15.5	18.5	31
D	35	47	63.4	86	133	180
E	42	54	70.3	95	145	180
F	110	120	125	142	200	270
G	19	20.5	20.5	24.5	28	43
H	270	283	310	350	485	520



HDPE PIPES AND FABRICATED FITTINGS

MLCO Trading Limited is an exclusive agent / distributor for two leading manufacturers of HDPE Pipes in South Africa. We are suppliers of SABS / ISO approved HDPE & PVC plastic pipes and a distributor of the complete range of HDPE fittings and Valves. We supply to all HDPE pipes and fabricated fittings to all PE dimension tolerances.

It is the priority of MLCO Trading Ltd to ensure that the service we provide is carried out to our client's fullest satisfaction. We also specialize in thermoplastic welding and installations of diversified high performance range of Plastic pipes.

Our knowledge and services include the following:

- Suppliers of S.A.B.S approved HDPE (High Density Poly Ethylene), PP(Poly Propylene and PVC (Polyvinyl Chloride) Pipes and fittings.
- Fabrication and installation of bends, tee pieces, y-pieces and reducers
- Our welding methods include Butt welding, Electro fusion, Branch, Socket and Extrusion welding.
- Installation of Pipe lines and fittings (Above and Underground.)
- Manufacturing of steel saddles.
- Repairs to pipes, fittings, tanks and linings.
- Suppliers of galvanized HDPE, steel and PVC flanges.
- Contractors for Civil Engineers and Horizontal drillers.
- Consulting Services.

The comprehensive range of products covers applications in the following market sectors

MINING



INDUSTRIAL



Only piping manufactured according to SABS ISO 4429 standards and specifications are used



MINING AND INDUSTRIAL HOSES



MEGAFLEX GARDEN HOSE

Easy to coil. Kink free
DLD 20- Sizes: 12mm and 20mm.
Standard duty DLD 25- Sizes: 12mm
and 20mm. Medium duty
DHD 60-Sizes: 12,20mm and 25mm. Heavy duty. SANS 645

MEGAFLEX DRAGLINE HOSE

Cut and abrasion resistant.
Identifying stripe 1772- sizes:
12mm and 20mm. Standard duty
1775- sizes: 12mm, 14 and 20mm.
Medium duty 1779- sizes: 20mm.
heavy duty. SANS 645
1778- sizes: 12mm, 20mm and 25mm. Extra heavy duty SANS 645

MEGAFLEX MINING HOSE

SANS. Tested to high burst pressure. Code and description
"embossed" Megaflex MD 500. Orange mining hose. Sizes: 10mm-
50mm. Standard duty Megaflex MD 4508. Blue mining hose.
Sizes: 10mm- 32mm. Medium duty Megaflex MD 5008. Orange
mining hose. Sizes: 10mm-50mm. Heavy duty Megaflex MAS 58.
Yellow anti-static hose. Sizes: 12mm, 20mm and 50mm. Anti-
static linear
Megaflex M 7011. Red rock drill hose. Sizes 10mm-50mm. Extra
heavy duty Megaflex Anti-static lording hose. Anti-static and semi-
conductive
M 8003. Smooth. Sizes: 16mm and 20mm
M 8013. Ribbed heavy duty. Sizes; 16mm
and 20mm M 7012. Red reinforced
flexible. Sizes: 20mm
M 7022. Black reinforced rigid. Sizes: 20mm

MEGAFLEX IB MHM HOSE MENDER

Cost effective.
Easy to use
Sizes: 10mm to

MEGAFLEX INDUSTRIAL HOSE

Good flexibility. Cut abrasion resistant. Chemical resistant
Megaflex 16001/2. Clear wall hose. Sizes: 3mm-50mm.
Low pressure
Megaflex 17009. Clear reinforced hose. Sizes: 3mm-50mm. High
pressure Megaflex 17019. Fuel hose. Sizes: 3mm-12mm, 5mm.
Resistant to fuel Megaflex 17029. L.P. gas hose. Sizes: 6mm, 8mm
and 10mm. SANS 11562000 Megaflex 17004. Air and water hose.
Sizes: 6mm-12mm. Cut resistant Megaflex 1776. Fire reel hose. Sizes
12,5mm and 20mm. SANS 10861975 Megaflex 17011. Rock drill
hose. Sizes: 10mm-50mm. Extra heavy duty


HELIFLEX SUCTION HOSE

Specially designed for suction purposes. Rigid PVC core prevents collapse
under suction HELIFLEX IS 754. Ducting hose. Sizes: 25mm-150mm
HELIFLEX IS 755. Medium duty. Sizes:
25mm-100mm HELIFLEX IS 866. Heavy
duty. Sizes: 25mm- 250mm
HELIFLEX IS 868. Non-toxic. Sizes: 25mm-
200mm HELIFLEX IS 867. Fuel resistant.
Sizes: 25mm- 200mm HELIFLEX IHD 899.
Dredging hose. Sizes: 150mm- 350mm



MINEFLO HIGH IMPACT PRESSURE SYSTEM

The Mineflo product range is produced in high impact PVC-U and is designed to provide optimum performance under physically demanding conditions. Mineflo PVC pressure pipes are made to design stresses of 10 MPa and 12.5 MPa. They also provide excellent thermal insulation and low temperature properties for pipes used in the conveyance of chilled water.

Mineflo® High Impact Pressure Systems - SANS 1283				
	Pressure Rating	Outside Diameter	Minimum Pipe Wall	Pipe Mass
	(kPa)	(mm)	Thickness (mm)	(kg/m)
	Mineflo 900kPa Class 9	55	2.4	0.6
		105	4.6	2.2
		155	6.7	4.7
		210	9.1	8.7
		250	10.8	12.7
	Mineflo 1200kPa Class 12	55	2.2	0.8
		105	6.0	2.8
		155	8.8	6.1
		210	11.9	11.3
	Mineflo 1600kPa Class 16	250	14.2	15.6
		55	4.1	1.0
		105	7.8	3.6
		155	11.5	7.8
		210	15.6	14.5
		250	18.6	20.1

UNIDELTA COMPRESSION FITTINGS

The Unidelta range of compression fittings and clamp saddles offer a cost effective method of connecting Blue and Black MDPE tubes in a size range of 16mm up to 110mm.

The Unidelta compression fittings in Polypropylene ensure a perfect hydraulic seal in pressurised distribution seals.

The joining system consists of linking the polyethylene pipe by a clamping ring that surrounds and grips the pipe after the blue nut has been tightened.

Their technical features make Unidelta compression fittings extremely easy and rapid to install. The range offers diameters from 16mm to 110mm with 16 bar nominal pressure.



PLASSON COMPRESSION FITTINGS

Plasson Mechanical Compression PP fittings offer solutions for connecting PE pipes, used for conveying water and other fluids in urban and inter-urban infrastructure, industrial, mining, landscape and farming applications.

Plasson Mechanical Compression Fittings are designed to withstand working pressures of up to 16bar, and also include valves which allow the regulation of flow. These fittings are manufactured in diameters ranging from 16mm to 160mm

The Plass4 universal pipe fitting allows connections to all approved pipe types of all pipe materials within the tolerance of the fitting.





SAFETY / ROCKFALL PROTECTION NETTING

MLCO Trading Limited is a distributor of quality reinforced Safety Nets which have been SABS approved.

SPECIFICATIONS:

Safety Net

- Polyethylene braid, 6mm in diameter- breaking strength of 400kg.

Reinforcement

- 10mm Polypropylene rope surround- breaking strength of 704kg.
- 10mm Polypropylene rope across from corner to corner.
- 10mm Polypropylene rope along the length, in the centre of the net.
- 10mm Polypropylene rope along the width of the net

Carbine Hooks

- 140 x 12mm carbine snap hooks with inserts:
- 1.5m x 1.5m = 8 carbine snap hooks
- 1.8m x 1.8m = 8 carbine snap hooks
- 4.0m x 3.0m = 12 carbine snap hooks
- 3.0m x 1.2m = 8 carbine snap hooks
 - Joints (Reinforcing only)
- Hand spliced
 - Colour Coding
- Our reinforced safety nets will be colour coded according to size at the request of the mine.





EARTH MOVING SPARE PARTS

MLCO Trading LTD, is working with a European Company specialising in the purchase and sale of spare parts principally for construction, heavy mining and quarrying plant.

We can supply Spares for the following:

Civil & Mining

Caterpillar

Volvo

Euclid

Case Poclairn

Hitachi

JCB

Terex

Fiat Allis



New Holland

Fiat Hitachi

O&K

Champion

Komatsu

Liebherr

Dawoo

Finishers & Compactors

ABG

Marini

Bomag

Hamm

Vogele

Wirtgen

Dynapac

Bitelli





LOCOMOTIVE SPARES

MLCO Trading Ltd, offers a comprehensive range of parts and equipment for Locomotives in the Mining and Civil Industries. We provide parts for locomotives powered by diesel engines or from electric trolley lines, batteries or a combination of both.

We work closely with our counterparts in South Africa to bring you high quality mechanical and electrical parts. We most commonly supply spares for the larger manufacturers including Goodman, Jeffrey and Greenbat.



The Goodman family of medium to heavy locomotives includes battery, trolley and combination battery / trolley models. The range is constructed to withstand the rigors of high-production mining.

Goodman locomotives feature single reduction, axle hung, slow speed motors for longevity and low maintenance.

Goodman production model locomotives meet most applications.

Designed and built in Johannesburg, Goodman engineering expertise caters for special engineering, modification of production models and inclusion of unique operational features.

GREENBAT

Greenbat was the trade name for the locomotive range of Greenwood and Batley of Leeds, U.K.. Famous for their mining locomotives, these locos tended to be of a standard design which could be adapted for many gauges, usually by widening the frames.



PREFABRICATED BUILDINGS

DESIGN, SUPPLY AND CONSTRUCT

MLCO Trading Limited has a team of personnel in Kitwe Zambia which construct prefabricated buildings. We can provide the design with detailed drawings, supply and construct buildings to your requirements.



- Mining Offices
- Supply Offices
- Safety Schools
- Accommodation
- Ablution Blocks
- Dining / Canteens

Advantages:

- Quick Construction
- Low Maintenance
- Affordable
- Efficient



Chibuluma Mines PLC

- Supply Office
- Training Office
- Mining Office & Control Rooms
- Met Laboratory
- Community School



WRE HOSE FITTINGS – WEST RAND

MLCO Trading Limited is a stockist of Mining Hose

Fittings We have the following in stock:

- i. Evertite Spuds – Male and Female
- ii. Kwikfit Spuds – Male and Female
- iii. Hosetails
- iv. Ball Valves
- v. Glenn Ball Valve
- vi. Laterals
- vii. Whipchecks
- viii. Nipples and Sockets

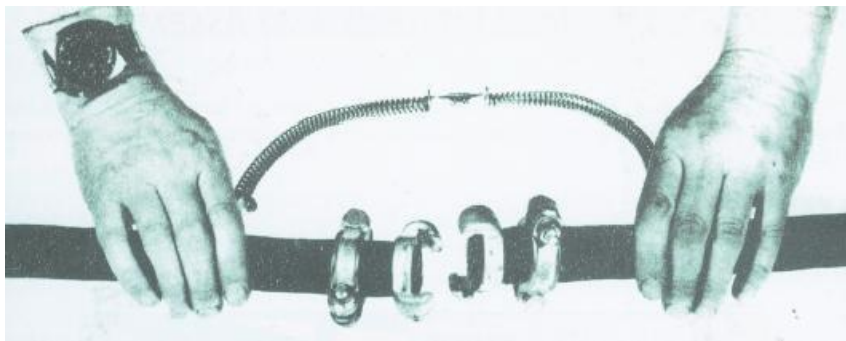




WHIPCHECK – SAFETY SLINGS

- To help prevent accidents or injury resulting from hose or coupling failure.

CABLE	TO FIT HOSE SIZE	PRODUCT CODE
3mm	12mm to 32mm x 300 long	RT20
3mm	12mm to 32mm x 300 long	RT25
4mm	40mm to 75mm	RT50
4mm	45mm to 120mm	RT70
6mm	40mm to 75mm	RT60



A POSITIVE SAFE – GUARD FOR HOSE CONNECTIONS

These strong steel cables prevent hose whip in case of accidental separation of coupling or clamp device. 'Whipcheck' reaches across the hose fittings to provide stand- by safety for hose. Spring loaded loops in cable ends open easily to pass over the couplings for firm grip on hose as shown.

'THOROUGHLY TESTED WITH YEARS OF SERVICE'



PRESSURE EQUIVALENT TABLES

PSI	BAR	KPa	MPa
1	0,06	6,89	0,006
5	0,34	31,48	0,034
10	0,68	68,96	0,068
20	1,37	137,9	0,137
30	2,06	206,8	0,206
50	3,44	344,8	0,344
75	5,17	517,2	0,517
100	6,89	689,6	0,689
125	8,62	862	0,862
150	10,34	1034	1,034
175	12,06	1206	1,206
200	13,79	1379	1,379
250	17,24	1724	1,7214
300	20,68	2068	2,068
350	24,13	2413	2,413
400	27,58	2758	2,758
450	31,03	3103	3,103
500	34,48	3448	3,448
550	37,93	3793	3,793
600	41,37	4137	4,137
650	44,82	4482	4,482
700	48,27	4827	4,827
750	51,72	5172	5,172
800	55,17	5517	5,517
850	58,62	5862	5,862
900	62,06	6206	6,206
950	65,51	6551	6,551
1000	68,96	6896	6,896
1100	75,86	7586	7,586
1200	82,75	8275	8,275
1300	89,65	8965	8,965
1400	96,55	9655	9,655
1500	103,4	10344	10,34
1600	110,34	11034	11,034
1700	117,24	11724	11,724
1800	124,13	12413	12,413
1900	131,03	13103	13,103
2000	137,9	13793	13,79
2100	144,8	14482	14,48
2200	151,72	15172	15,172
2300	158,6	15862	15,86
2400	165,51	16551	16,551
2500	172,41	17241	17,241

PSI	BAR	KPa	MPa
2600	179,1	17931	17,93
2700	186,2	1862	18,62
2800	193,1	19310	19,31
2900	199,9	1999	19,99
3000	206,8	2068	20,68
3100	213,7	2137	21,37
3200	220,6	2206	22,06
3300	227,5	2275	22,75
3400	234,4	2344	23,44
3500	241,3	2413	24,13
3600	248,3	2482	24,82
3700	255,1	255,1	25,51
3800	262,0	2620	26,20
3900	268,9	2689	26,89
4000	275,8	2758	27,58
4100	282,7	2827	28,27
4200	289,6	2896	28,96
4300	296,5	2965	29,65
4400	303,4	3034	30,24
4500	310,3	3103	31,03
4600	317,2	3172	31,72
4700	324,1	3241	32,41
4800	331,0	3310	33,10
4900	337,9	3379	33,79
5000	344,8	3448	34,48
5100	351,7	3517	35,17
5200	358,6	3586	35,86
5300	365,5	3655	36,55
5400	372,4	3724	37,24
5500	379,3	3793	37,93
5600	386,2	3862	38,62
5700	393,1	3931	39,31
5800	399,9	3999	39,99
5900	406,8	4068	40,68
6000	413,7	4137	41,37
6500	448,2	4482	44,82
7000	448,7	4827	48,27
7500	517,2	5172	51,72
8000	551,7	5517	55,17
8500	586,2	5862	58,62
9000	620,6	6206	62,06
9500	655,1	6551	65,51
1000	689,6	6896	68,96



MEASUREMENT EQUIVALENT TABLES

INCHES	FEET	MM	METRES
1	0,08333	25,4	0,0254
2	0,16667	50,8	0,0508
3	0,24999	76,2	0,0762
4	0,33333	101,6	0,1016
5	0,41667	127	0,127
6	0,49999	152,4	0,1524
7	0,58333	177,8	0,1778
8	0,66666	203,2	0,2032
9	0,74999	228,6	0,2286
10	0,83333	254	0,254
11	0,91666	279,4	0,2794
12	0,99999	304,8	0,3048
13	1,03329	330,2	0,3302
14	1,16666	355,6	0,3556
15	1,24999	381	0,381
16	1,33333	406,4	0,4064
17	1,41666	431,8	0,4318
18	1,49999	457,2	0,4572
19	1,58332	482,6	0,4826
20	1,66667	508	0,508
21	1,74999	533,4	0,5334
22	1,83332	558,8	0,5588
23	1,91666	584,2	0,5842
24	1,99999	609,6	0,6096
25	2,08332	635	0,635
26	2,16666	660,4	0,6604
27	2,24999	685,8	0,6858
28	2,33333	711,2	0,7112
29	2,41665	736,6	0,7366
30	2,49999	762	0,762
35	2,91666	889	0,889
40	3,33333	1016	1,016
45	3,749985	1143	1,143
50	4,16666	1270	1,270
55	4,58331	1397	1,397
60	4,99998	1524	1,524