



**MLCO TRADING LTD**

*Products &  
Services Catalogue*

**2025**

*Reliable, Efficient, Innovative*

**Website:** <http://www.mlcotrading.com>

**Email:** [admin@mlcotrading.com](mailto:admin@mlcotrading.com)

**Linkedin:** <https://www.linkedin.com/company/mlco-trading-limited/?viewAsMember>



## Our Clients



## Company profile

MLCO Trading Limited has over 18 years of industry expertise in underground mining to provide quality, reliable, durable and efficient branded products and services within the Mining and Industrial Industry in Zambia and The Democratic Republic of Congo.

### Vision Statement:

*'MLCO Trading Limited Ltd is placed to become the leading supplier within its field of Supply and Service. We aim to gain recognition over Zambia and the Democratic Republic of Congo, as a provider of quality customer specific products that can be relied upon.'*

### Corporate & Technical Attributes:

- MLCO Trading Ltd provides a professional service, by making available to customers reliable, durable, competitively priced and efficient branded products.
- MLCO Trading Ltd, only provides quality tested products which carry the International Standards Certification providing you with a peace of mind that the products have been tried and tested and approved for mining use.
- MLCO Trading Ltd ensures value for its customers by creating strong relationship through providing of a consistently reliable service and remaining competitive within the market place.
- MLCO Trading Ltd creates value for employees by providing a balanced reward structure, competitive remuneration, and sales commission recognition for value contribution, career progression opportunities and development. This ensures the realization of each individual's potential, in the best interest of the company and the individual employee.

# Table of Contents

• Split Sets/Friction Anchors and Washers .....	4
• Resin Bolt.....	5
• Welded Mesh & Osro Tendon Straps.....	6
• Cable Anchors .....	7
• Grout Cement & Capsule Cement .....	7
• Ventilation Fans .....	8
• Ventilation Ducting .....	9
• Ventilation seals .....	10
• Spiral Ducts, Steel Vent Ducts & Silencers .....	11
• Steel ventilation pipes and fitting .....	11
• Mine Hoses .....	12
• Hose Fittings .....	13
• Whipcheck Slings .....	14
• Elephant Hoses .....	14
• Mine Markers.....	15
• Mineflo Pipes & Fittings .....	16
• Valves .....	17
• Unidelta Fittings .....	18
• Pinch Bars .....	18
• Pigtail Eyebolts .....	19
• Backfill Pipes .....	19
• HDPE Pipes .....	20
• Heavy Duty Chains .....	20
• Vent Accessories .....	20
• Electrical Dol Starters, Panel Boxes & Soft Starters .....	21
• Safety Rockfall Protection Netting .....	21
• Plasson Fittings .....	22
• Hydraulic consumables .....	22
• Alvenius pipes, couplings and fittings.....	22
• Prefabricated Buildings .....	23
• Pressure Equivalent Calculators .....	24
• Measurement Equivalent Tables .....	25
• MLCO Corporate Social Responsibility.....	26





# Split Sets

- ❖ We offer underground mining support split sets designed to reliably support applications that require stable ground by using **friction rock bolts** provide increased gripping force by pressing against the rock along their contact length.
- ❖ Our rock bolts adjust to strengthens with time and ground vibrations, providing robust ground stability.  
**Never tighten Friction Bolts.**
- ❖ *Split Set®* stabilizers have **3 models**. They come in *standard, galvanized, or stainless-steel*



## Split set sizes

Available for each	
	33mm x 0.9m
	39mm x 0.9m
	39mm x 1.2 m
	39mm x 1.8m
	39mm x 2.4m
	46mm x 2.4m
	46mm x 3m

*\*Custom sizes are available on request*

*We supply both washers and split sets 4 types*

- *Black (s420mc)*
- *Galvanized/hot dipped*
- *Thermal Zinc defused*
- *3cr12 (stainless steel)*

## Standard Available Sizes

Type	Size
Stubby washer	33mm x 125mm x 125mm x 4mm
	39mm x 125mm x 125mm x 4mm
	39mm x 150mm x 150mm x 4mm
	46mm x 150mm x 150mm x 4mm
Standard washer	33mm x 125mm x 125mm x 4mm
	46mm x 150mm x 150mm x 4mm
Combination washer	33mm x 125mm x 125mm x 4mm
	46mm x 150mm x 150mm x 4mm
	46mm x 300mm x 285mm x 1.6mm
	46mm x 250mm x 250mm x 1.6mm





# Resin Bolt

We offer underground mining support resin bolts designed to deliver dependable reinforcement in ground conditions that require permanent, high-load anchoring. These bolts bond securely within the drill hole using resin capsules, creating a strong, rigid connection between the bolt and the surrounding rock.

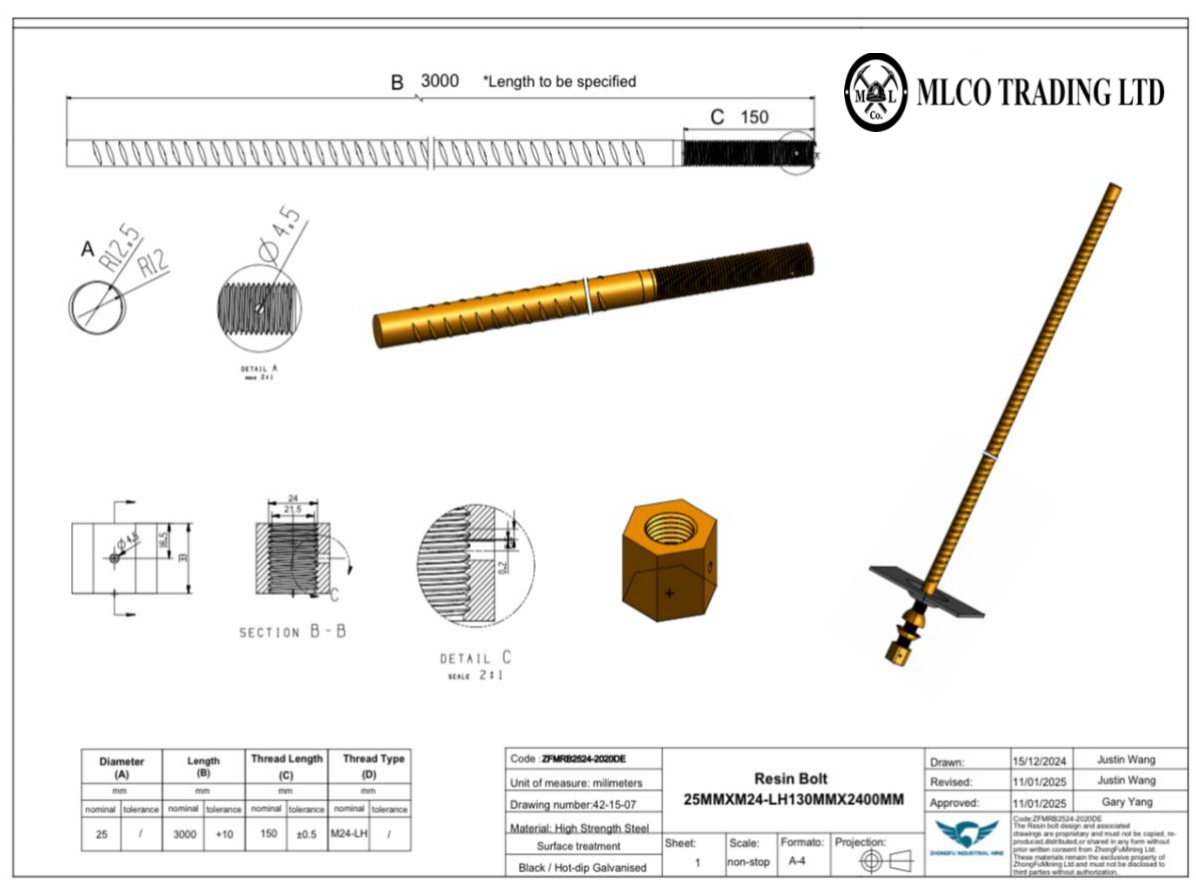
Our resin bolts are ideal for applications where immediate load-bearing capacity and long-term stability are critical.

Ensure proper mixing of resin during installation—**never rotate the bolt after the resin has set.**

## Resin bolts

- m16 x 900mm
- m16 x 1250 mm
- m16 x 1800mm
- m16 x 2400 mm,

*available as black steel, hot dipped galvanized*







# Wire Mesh – Blast On Mesh & Woven Mesh

## Available sizes

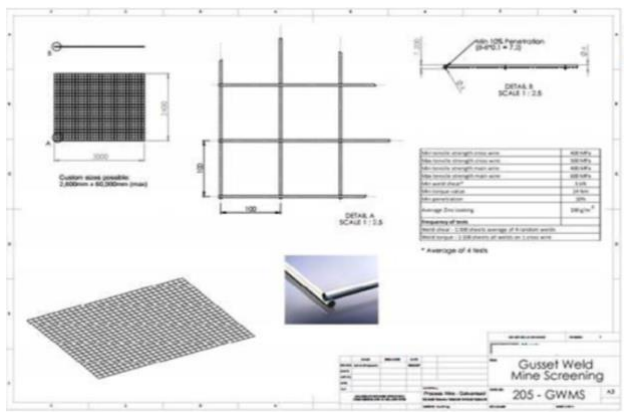
<b>Rigid Sheet - Standard Sizes</b>	<ul style="list-style-type: none"> <li>• 2.4m wide x 3.0m length</li> <li>• 2.4m wide x 3.5m length</li> <li>• 2.4m wide x 4.3m length</li> <li>• 2.4m wide x 6.0m length</li> </ul>
<b>Rigid Sheet - Wire Size:</b>	<ul style="list-style-type: none"> <li>• 4mm</li> <li>• 5.6mm</li> </ul>
<b>Rigid Sheet - Aperture:</b>	<ul style="list-style-type: none"> <li>• 100mm x 100mm</li> <li>• 75mm x 75mm</li> </ul>
<b>Diamond Wire Rolls - Standard Sizes</b>	<ul style="list-style-type: none"> <li>• 1.8m wide x 15m length</li> <li>• 2.0m wide x 15m length</li> <li>• 2.4m wide x 15m length</li> </ul>
<b>Diamond Wire Rolls- Wire Size:</b>	<ul style="list-style-type: none"> <li>• 4mm</li> <li>• 5.6mm</li> </ul>
<b>Diamond Wire Rolls - Aperture:</b>	<ul style="list-style-type: none"> <li>• 100mm x 100mm</li> <li>• 75mm x 75mm</li> </ul>
<b>Folded sheet</b>	<ul style="list-style-type: none"> <li>• 3m x 2.4m</li> <li>• Folded: 1.5m x 1.7m</li> </ul>

*Gusset Weld Mine Screening (GWMS®)* is known for its quality, cost-effective rock support and strata control which offers safer working conditions for underground miners.

With a weld shear force reaching 10 kN, *GWMS®* is designed to withstand blasting, reducing rock falls and improving safety.

	STRENGTH	WEIGHT	FLEXIBILITY
Ø4.0mm Mesh	●○○	●○○	●●●
Ø5.6mm Mesh	●●●	●●●	●○○
3D Mesh	●●○	●●○	●●○

Designed for fast, easy installation, this cost-effective solution offers a wide range of sizes to suit various needs while enhancing roof consolidation between bolt spacing and delivering strong axial support to both the roof and side walls.



GWMS® 4.0mm Spec Sheet & GWMS® 5.6mm





This assembly may be fitted with some or all of the following items:

- Grout Tubes
- Spacers
- Centralizers
- End Caps
- Breather Tubes

#### Features:

- Sidewall excavation support
- Rehabilitation support
- Ground anchors
- Soil stabilization

## Cable Anchors

A number of stranded cables are assembled to form cohesive anchors complying with the engineer's requirements, **permanent or temporary**. We supply two types: **Passive cable anchor** (comes complete with bird cage) **Active cable anchor** (comes complete with external expansion shell)  
Available in 25 ton sets and 38 ton sets



#### Accessories:

- Cable Anchor P159D Hydraulic Hand Pump
- Cable Anchor Hydraulic Copper/Cutter
- Cable Anchor Tensioner Unit

#### Size chart

Standard Length:	4.5m
	6.5m
	10.5m
Standard Mechanical Shell:	48mm Hole
	51mm Hole

## Cable Grout & Capsule Cement

### Cable cement

Our Capsule Cement is supplied as ready to use dry powder encapsulated in a water permeable skin. When required for use, the capsules are soaked in water which is absorbed through the skin forming a thixotropic non-shrink grout. The Capsules absorb the correct amount of water and can be used in rock temperatures up to 60degC. Capsule size: 25mm



*Chloride-free and non-shrinking thixotropic texture*



### Capsule cement

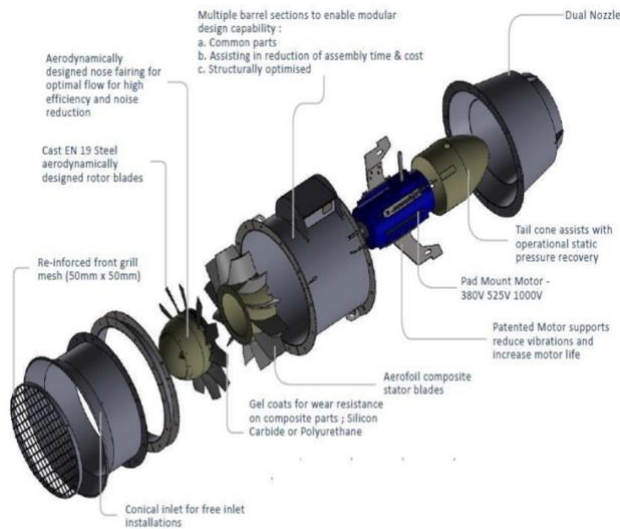
The grout for the cable anchors is manufactured in South Africa, and it is available in both medium set and quick set bags. Every bag contains ten kilograms of a single-component cementitious powder that is diluted with water and is intended for use in the construction and mining industries for the installation of mechanical long anchors.



Up to 15 meters pumpable  
No water loss or shrinkage is present.  
Compressive strength of 8 MPa after 24 hours has been achieved with no grout run-out.  
At the end of 28 days, the maximum compressive strength was 32 MPa.



# High Efficiency - Mine And Tunnel Ventilation Fans



MLCO supplies the highest-efficiency industrial fans, engineered specifically for demanding environments in the mining, petrochemical, energy, and steel sectors. Our fans feature cutting-edge, proprietary designs that deliver exceptional performance, significantly reduce CO<sub>2</sub> emissions, and lower energy consumption. Each unit is precision-built to suit its unique operational environment, ensuring maximum reliability and efficiency. MLCO is committed to providing industry-leading ventilation solutions that combine innovation, sustainability, and long-term cost savings.



## Client Testimonials on Energy Efficiency and Increased Performance of Auxiliary Fans

OUR REF: MeCHAL FANS



Lonmin Platinum  
24 Mineco Boulevard  
1st Floor  
Building 13  
Marine Aich  
Marine North  
2155  
Republic of South Africa  
PO Box 58811  
Stane Park 2152  
Gauteng  
Republic of South Africa  
T: +27 (0)11 218 8300  
F: +27 (0)11 218 8310  
Email:  
[www.lonmin.com](http://www.lonmin.com)

### Letter regarding MeChal 45kW Energy Efficient Fan Performance:

In 2012 Lonmin started the process of replacing the current 45kW fans in operation with a new improved design brought to market by MechCal.

The fans were extensively tested on a test bench, purchased by Lonmin, for the purposes of measuring the performance claimed by the OEM against actual results. The tests concretely proved that the fans were indeed performing as stated by the OEM.

After the fans performance had been confirmed the fans were systematically installed. The installation took longer than anticipated as mine construction crews were utilized to do the installation. The fans were changed as old fans failed. This had the undesired effect that the saving was not realised immediately but over the course of a thirty month period. A total of 290 fans were purchased. No failures on the steel-bladed fans have been experienced at the time of writing this letter, even though some had been installed for a period of more than two years.

This letter does not constitute endorsement of the product and Lonmin does not accept any liability in this regard. The report is merely a summary of technical facts and the experience Lonmin has had with the product.

Kind Regards  
  
Gerhard Wernecke  
Energy and Asset Manager  
Lonmin

Cell: 083 304 7440  
Email: [Gerhard.Wernecke@lonmin.com](mailto:Gerhard.Wernecke@lonmin.com)



**SibanyeGOLD**

Sibanye Gold Limited  
Reg. 2005/004476/06  
  
Head Office and Business Address:  
Gauteng Business Park  
1 Josephine Street  
238 Centurion Ave  
Centurion, Gauteng 1820  
  
Postal Address:  
Private Bag 45  
Medunsa, 1780  
Tel: +27 11 238 9600  
Fax: +27 11 238 9603

MechCal Composite Fans (Pty) Ltd  
P.O. Box 1866  
Silverton  
0127

### MechCal 45kW Energy Efficient fan performance

In August 2010 Sibanye Gold commenced with the process to replace its standard 45 kW fans in operation with a new improved energy efficient fan design brought to the market by MechCal.

Prior to the procurement of the fans, Sibanye Gold performed extensive tests on the fans for the purpose of confirming the fan performance was indeed as claimed by the OEM. The fan performance tests in fact confirmed the claims made by MechCal about the energy efficient fans.

Sibanye Gold entered into a contract with MechCal for the procurement of 882 fans to replace all the standard 45 kW fans across all its operations. The replacement commenced in November 2011 and took place over a period of two years. Initial problems with composite impellers were resolved by reverting to redesigned steel impellers. The power savings realized with these fans amounts to 14,95MW.

This letter does not constitute an endorsement of the product and Sibanye Gold does not accept any liability in this regard. This letter is merely a summary of technical facts and experience by Sibanye Gold about the MechCal 45kW energy efficient fans.

AR Nundoli 30/5/14  
Group Environmental Engineer

[www.sibanyegold.co.za](http://www.sibanyegold.co.za)

Director: Sello Mokoale (Chairman) Head Treasurer: JETCO Chet Kuyler CFO: Chika Chikwika Robert Choro Timothy Cunningham  
Barry Davidson Rick Maseko Hlengiwe Mkhomo Shai Kalka Bopape Sello Bopape Sello van der Merwe Amy Winkler  
Cash Finance (Corporate Secretary) (Pron-Besuchth)  
Vol No. 475 030 9410





# Layflat - Ventilation Ducting

Size chart (custom sizes available)	
Standard Diameters:	<ul style="list-style-type: none"> <li>• 760mm</li> <li>• 800mm</li> <li>• 1000mm</li> <li>• 1015mm</li> <li>• 1220mm</li> <li>• 1400mm</li> <li>• 1600mm</li> </ul>
Lengths:	<ul style="list-style-type: none"> <li>• 5 meters</li> <li>• 8 meters</li> <li>• 10 metres</li> <li>• 15 meters</li> <li>• 20 meters</li> </ul>

## MLCO - Flexible Ducting and Accessories

Ventiflex ducting is manufactured in Drammen, Norway from vinyl coated scrim and is delivered to fit different service requirements. Non-standard lengths can be assembled to suit in our warehouse in Kitwe, Zambia

### Product info

All seams are welded. One end of the tube is fitted with a steel coupling ring. The ring is also for Ventiflex accessories

- Hooks (Various Steel Hooks for different uses)
- Grommets (Reinforced PVC grommets in the same material as the textile)
- Soft Couplings (Safe, Reliable, easy to install and separate)
- Zip Couplings
- Steel Couplings (LP Coupling / VF Coupling)

## Ventiflex accessories

- Hooks (Various Steel Hooks for different uses)
- Grommets (Reinforced PVC grommets in the same material as the textile)
- Soft Couplings (Safe, Reliable, easy to install and separate)
- Zip Couplings
- Steel Couplings (LP Coupling / VF Coupling)

## Features:

- The only proven safest and strongest ventilation ducting
- Modular Design, High Strength RipStop Technology & Easy Installation
- External Wire Reinforced for exhaust at variable pitches of 50, 75 and 150mm
- Strict quality assurance on material, unique batching of material
- Unique tri weaved rip-stop material
- Fire Retardant





# Ventilation Seals

Seal Type	Description	Installation Rate
<b>1. Inflatable Ventilation Plug with Man Door</b>	- Extremely easy to install and inflate. - Provides an airtight plug.	Approx. 3 seals per shift
<b>2. Reinforced Quick Seal</b>	- Reinforced mesh seals. - Installed with a straining wire backing structure. - Quick and simple installation.	Approx. 1 seal per shift
<b>3. Timber Frame with Versifoam</b>	- Similar to previous Chibuluma setup. - Timber walls with Versifoam sprayed over to form a sealed barrier.	Approx. ½ seal per shift (2 days per seal)



*Inflatable Ventilation plug with man door*



*Reinforced Quick Seal 0.1*



*Reinforced Quick Seal 0.2*





# Spiral Ventilation Ducting

## Features:

- The only proven safest and strongest ventilation ducting
- Modular Design, High Strength RipStop Technology & Easy Installation
- External Wire Reinforced for exhaust at variable pitches of 50, 75 and 150mm
- Strict quality assurance on material, unique batching of material
- Unique tri weaved rip-stop material
- Fire Retardant

## Spiral Ducting Accessories

- Hooks (Various Steel Hooks for different uses)
- Grommets (Reinforced PVC grommets in the same material as the textile) – Much Higher tensile strength than traditional brass eyelets
- Soft Couplings, Velcro (Safe, Reliable, easy to install and separate)
- Zip Couplings
- Steel Couplings (LP Coupling / VF Coupling)

A comprehensive range of collapsible pipes for forced and exhaust application with associated range of fittings and accessories.



- ❖ Modular Design
- ❖ Established Mining Standard
- ❖ External Wire Reinforced for Exhaust at Pitches Of 50, 75 And 150mm
- ❖ Materials: PVC 670 And 750gsm
- ❖ Diameters Ranging From 305, 830, 410, 550, 570, 610, 760, 915, 1015, 1220, 1350 And 1800mm
- ❖ Product Testing To:
  - Flammability - Ncb 246:1985
  - Electrical Resistance - S Abs 1267 T
  - Toxicity - Naval Eng Std 713

# Steel ventilation pipes and fitting

MLCO Trading supplies steel ventilation pipes and the innovative Enerduct—engineered for superior airflow. Backed by CSIR simulations, the Enerduct's spiral-swage design reduces friction pressure drop by 8.8–13.04%, boosting efficiency and cutting energy costs. A smarter, stronger solution for modern mining ventilation.

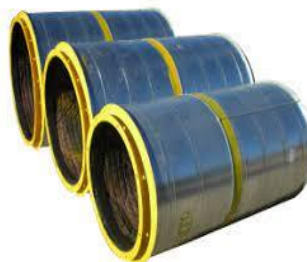
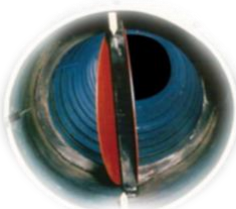
**Our available sizes include:**  
760mm, 1015mm or 1220mm diameters – all sizes come in 3metres in length

## Features:

- Robust Rigid for Long term Exhaust Application
- Exhaust Application in Dusty Environments

## Steel Ducting Accessories

Ducting, the spiral swage's design reduces friction pressure drop by 8.80% to 13.04% at various flow rates, as demonstrated by the research results.



## Our available sizes include:

760mm, 1015mm or 1220mm diameters – all sizes come in 3metres in length

## Features:

- Robust Rigid for Long term Exhaust Application
- Exhaust Application in Dusty Environments

## Steel Ducting Accessories

- VF Wrapping – 300mm x 50metres, self-sealing tape for joints







# Mining & Industrial Hoses

We have a stock list for all mining occasion to ensure

## Available Types and features

## Names

## Size Range

**Megaflex garden hose** - Easy to coil, Kink free

DLD 20	12mm and 20mm
Standard duty DLD 25	12mm and 20mm.
Medium duty DHD 60	12mm, 20mm and 225m

**Megaflex dragline hose** -Cut and abrasion resistant.

Identifying stripe 1772	12mm and 20mm.
Standard duty1775	12mm, 14mm and 20mm.
Medium duty 1779	20mm
Heavy duty. Sans 645 1778	12mm, 20mm and 25mm.

**Megaflex mining hose** - Sans tested to high burst pressure, Anti-Static and semi-conductive,

Extra heavy-duty sans 645md 500 Orange mining hose	10mm-50mm.
Standard duty megaflex md 4508. Blue mining hose	10mm- 32mm
Medium duty megaflex md 5008 Orange Mining hose	10mm-50mm.
Heavy duty megaflex mas 58 Yellow anti-static hose	12mm, 20mm and 50mm.
Anti-Static linear Megaflex m 7011 Red rock drill hose	10mm-50mm.
Extra Heavy duty megaflex M 8003. Smooth	16mm and 20mm
Extra Heavy duty megaflex M 8013. Ribbed heavy duty.	16mm and 20mm
M 7012 Red reinforced Flexible	20mm
M 7022. Black reinforced rigid	20mm

**Megaflex IB MHM hose mender** - Cost effective, Easy to use

Megaflex IB MHM hose mender	10mm
-----------------------------	------

**Megaflex industrial hose** - Flexibility, Cut abrasion resistant, Chemical resistant

Megaflex 16001/2. Clear wall hose	3mm-50mm.
Low pressure Megaflex 17009. Clear reinforced hose	3mm-50mm
High Pressure megaflex 17019. Fuel hose	3mm-12mm, 5mm
megaflex 17029. L.P. gas hose.	6mm, 8mm and 10mm.
Sans 11562000 megaflex 17004 Air and water hose	6mm-12mm.
megaflex 1776. Fire reel hose.	12.5mm and 20mm
Extra heavy-duty Sans 10861975 megaflex 17011. Rock drill Hose	10mm-50mm.

**Heliflex suction hose** -Specially designed for suction purposes, Rigid PVC core prevents collapse

754 Ducting hose	25mm-150mm
755 Medium duty	25mm-100mm
868. Non-toxic	25mm-200mm
867. Fuel resistant	25mm- 200mm
HD 899.Dredging hose	150mm- 350mm



# Mining Hose Fittings

We offer all the fittings and valves for the mining hoses.

## Types:

- Male and Female, Double PIN and single PIN Spuds
- Single PIN and Double PIN Hose Tails
- Hose Menders
- Hose Clamps
- Nipples and Sockets

## Features:

- Heavy-Duty, Cast-Iron Fittings
- Long Life
- Temperature Range: -20degC to 130DegC
- Cost Effective



# Hose Fittings

Fittings we have the following in stock:

- I. Evertite spuds – male and female
- II. Kwikfit spuds – male and female
- III. Hosetails
- IV. Ball valves
- V. Glenn ball valve
- VI. Laterals
- VII. Whipchecks
- VIII. Nipples and socket

## Size chart

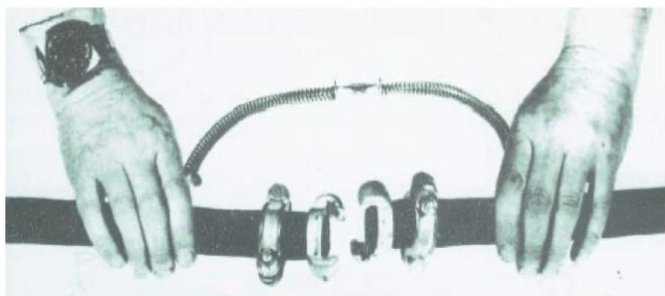
<b>Standard Diameters:</b>	M16 M20
<b>Standard Lengths:</b>	450mm 880mm 1500mm
<b>Standard Shell:</b>	33mm 38mm 43mm 51mm
<b>Finishes</b>	Galvanized, Black





# Whipcheck – Safety Slings

Designed to help prevent accidents or injury resulting from hose or coupling failure.



## Cable to fit hose size product code

3mm 12mm to 32mm x 300 long rt20

3mm 12mm to 32mm x 300 long rt25

4mm 40mm to 75mm rt50

4mm 45mm to 120mm rt70

6mm 40mm to 75mm rt60



## A positive safe – guard for hose connections

These strong steel cables prevent hose whip in case of accidental separation of Coupling or clamp device. 'whipcheck' reaches across the hose fittings to provide Stand- by safety for hose. Spring loaded loops in cable ends open easily to pass Over the couplings for firm grip on hose as shown

# Elephant Hoses / Suction and Delivery Hoses

We hold extensive stock on Elephant Mining Rubber Hoses, for suction and delivery application. They are extensively used in mining and processing as well as agricultural pumping applications.

## Size chart

<b>Standard Sizes:</b>	75mm – 3 inches
	100mm - 4 inches
	150mm – 6 inches
	200mm – 8 inches
	250mm – 10 inches
<b>Standard Lengths</b>	300mm – 12 inches
	3 metres
	6 metres
	10 metres

## Features:

High pressure  
High resistance to abrasive material/slurries  
4:1 burst pressure as standard  
Suitable for material containing chemicals, acids and hydrocarbons







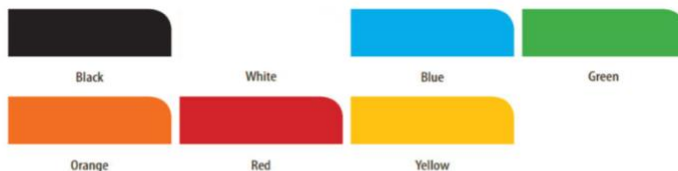
# Mine Markers

Our Mine Marker is a non-flammable marking paint suitable for a variety of applications, such as surveying, civil works, landscaping, construction, and mine blast marking.

On surfaces that are damp, dry, or dusty, it gives a high-visibility mark that lasts; sticks well to wet rock and won't fade after quickly drying. Contains no chromates, lead, or ozone-depleting chemicals like CFCs to ensure safety with every use.



## COLOURS FOR BLAST MARKER, BLAST MARKER 360° AND SURVEY MARKER



## FLUORESCENT COLOURS



## Features:

- High opacity, high quality, and high pigment loading.
- Available in Signal Colours
- Available in Fluorescent Colours
- Easy to use aerosol.
- Provides a lasting high visibility mark.
- Adheres well to damp rock.
- Will not wash away when dry.
- Fast drying.
- Non-flammable (flame extension test method).
- Does not contain CFC's ozone depleting substances, lead, or chromates.




MLCO's mine markers are known for their reliability, efficiency, and innovative formulation—specially designed to perform in insulated, damp, or even dry conditions. Built to withstand the rigors of challenging environments, our markers ensure clear visibility and lasting performance across a range of mining applications





# Mineflo High Impact Pressure System

Mineflo® High Impact Pressure Systems - SANS 1283				
	Pressure Rating	Outside Diameter	Minimum Pipe Wall	Pipe Mass
	(kPa)	(mm)	Thickness (mm)	(kg/m)
	Mineflo 900kPa Class 9	55	2.4	0.6
		105	4.6	2.2
		155	6.7	4.7
		210	9.1	8.7
		250	10.8	12.7
	Mineflo 1200kPa Class 12	55	2.2	0.8
		105	6.0	2.8
		155	8.8	6.1
		210	11.9	11.3
		250	14.2	15.6
	Mineflo 1600kPa Class 16	55	4.1	1.0
		105	7.8	3.6
		155	11.5	7.8
		210	15.6	14.5
		250	18.6	20.1

The Mineflo product range is produced in high impact PVC-U and is designed to provide optimum performance under physically demanding conditions. Mineflo PVC pressure pipes are made to design stresses of 10 MPa and 12.5 MPa. They also provide excellent thermal insulation and low temperature properties for pipes used in the conveyance





# Mining & Industrial Valves

*Lined Valve Company, Inc* designs and manufactures knife gate valves. *LVC* is based in Woodland, Washington, USA, with manufacturing plants in Washington and Florida. *MLCO Trading Ltd, Kitwe, Zambia* is the Agents for *LVC* and hold the following valve in various sizes at our Warehouse in Kitwe.

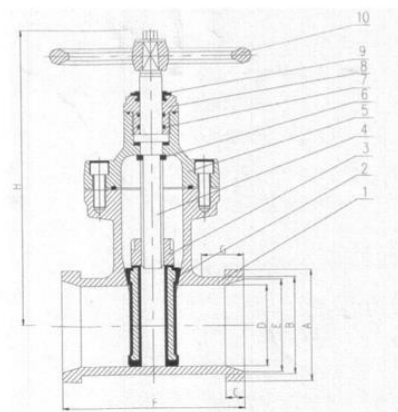
## Features

- **Heavy duty** cast ductile iron body, bonnet, gate and hand wheel.
- **Fusion Bonded Powder Coating** on all interior and exterior surfaces.
- **Alvenius K10 Coupling.**
- **16 Bar** design pressure.
- **EPDM Resilient Seat** for bi directional drip tight shut off.
- **Non-rising stem** hand wheel operated.
- **Brass Stem** bushing with EPDM stem seal and backseat provide reduced operating torque.
- **EPDM top stem seal** to keep dust and debris from working in between stem and bushing.
- Precision compression moulded gate seat for superior seating capability
- **Seat seals FLUSH** on bottom ID of body eliminating any pockets in the bottom of the valve to collect particles in the pipeline.
- **Stainless Steel stem** - corrosion resistance.
- **Tested to 24 bar** for body and bonnet hydrostatic test.
- **Tested to 17.6 bar** for gate integrity and seat leakage.
- Available in sizes **48mm through 203mm.**
- **Typical Applications:**
  - Portable Water - Mining
  - Waste Water - Tunnelling
  - Food Processing - Power
  - Cooling Water - Process Piping
  - Compressed Air Lines
  - Fire Protection Systems
  - Pumped Drainage Systems



## Dimensions (mm)

SIZE	48	60	76	102	152	203
A	52	64	83	108	161	216.5
B	48.3	60.3	76.1	101.6	152.4	203
C	12.5	13	13	15.5	18.5	31
D	35	47	63.4	86	133	180
E	42	54	70.3	95	145	180
F	110	120	125	142	200	270
G	19	20.5	20.5	24.5	28	43
H	270	283	310	350	485	520



MATERIALS OF CONSTRUCTION	
No & Name	Material
1 BODY	Ductile Iron
2 GATE **	Ductile Iron/EPDM
3 STEM NUT	Brass
4 STEM	Stainless Steel
5 BONNET*	Ductile Iron
6 BACK SEAT	EPDM
7 STEM SEAL	EPDM
8 GLAND	Brass
9 STEM SEAL	EPDM
10 HANDWHEEL	Ductile Iron





# Unidelta Compression Fittings

The Unidelta range of compression fittings and clamp saddles provide a cost-effective solution for connecting blue and black MDPE pipes from **16mm to 110mm**. Made from durable polypropylene, a perfect hydraulic seal for pressurized systems. Designed for efficiency and reliability, the fittings support up to 16 bar pressure, making them ideal for a wide range of applications.



## Fittings:

Unidelta and Plasson Compression Fittings, up to 160mm A15  
3 D and Segmented Bends, Equal Tees  
Stubs and Backing Rings

## Features:

High Pressure  
Low Cost, comparative to pressure rating in steel alternative  
Flexibility, ability to use in longer lengths than traditional steel  
Suitable up to 60deg C temperature

# Aluminium & Solid Steel Pinch Bars

Both solid **steel pinch bars** and **aluminium pinch bars** are available for purchase. Both tips are hot-forged and heat-treated with are high strength and durable and there is additional tip replacement available to ensure construction is lightweight and robust.



*Available  
sizes*

- 1.4m
- 1.8m
- 2.1m
- 2.4 m
- 3.0m
- 3.5m
- 4m
- 5m

*All pinch bars come complete  
with pinch bar hand gasket*



# Backfill / Ground Water Drain Pipes

High Strength HDPE drain pipes, ground water pipes  
Used for backfill operation, to allow removal of water in backfill area  
Used in Mining and Industrial applications

## Features:

- High Strength
- Slotted Pipes for Water Removal
- HDPE, Long Life

Standard Diameter 75mm 110mm  
160mm  
Standard length: • 6m length • 50m  
Coil



## Technical Data

Outside Diameter	mm	75	110	160
Inside Diameter	mm	63	95	140
Infiltration Area	mm <sup>2</sup> /m	>2500	>5 000	>5 000
Nominal Slot Width	mm	1.3	2	2
Slot Coverage	°(top)	240	240	240
Flow Channel	°(bottom)	120	120	120
Ring Stiffness	kPa	>450	>450	>450
Length Supplied	m	6	6	6
Coil supplied	m	50	50	50



# Pigtail Eyebolts

Size chart

<b>Standard Diameters</b>	M16 M20
<b>Standard Lengths</b>	450mm 880mm 1500mm
<b>Standard Shell</b>	33mm 38mm 43mm 51mm
<b>Finishes</b>	Galvanized Black

## Cable to fit hose size product code

Pigtail eyebolts are threaded at one end for the attachment of an expansion unit. (mechanical anchor)

The other end is hot worked to form a pigtail eyebolt for suspension of air, water, refrigeration and ventilation columns as well as for electrical cable and chain support

### Features:

Quick Installation

Ability to suspend heavy equipment quickly

UTS: 570 to 600MPa



# Heavy Duty Chain

We offer chain in various sizes and grades, available in **Short Link**, Long Link and Extra Long Link, stocked in Kitwe, Zambia.

### Available Sizes:

- 6mm
- 8mm
- 10mm
- 13mm
- 16mm

### Specifications:

- Grade 3
- Black and Galvanized



# Ventilation Accessories

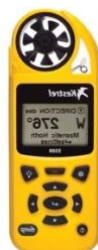
We supply a wide range of reliable ventilation instruments and accessories from our Kitwe stock, serving Zambia's mining industry with fast, local support and quality you can trust.

### Types:

- Anemometers (Digital & Analog)
- Hygrometers (Digital & Whirling)
- Clear Brattices
- Ventilation Curtains
- Ventilation Wrapping
- Temporal Sail Ventilation Curtains
- Emergency Ventilation Seals

### Features:

- Wide Range of Applications/Features
- Measurement of Air Flow, Temperature, Barometric Pressure, Gases
- Emergency Ventilation Tools





# HDPE Pipes & Fabricated Fittings

**We offer a range of knowledge and services that encompass the following:**

- Providers of S.A.B.S approved HDPE (High Density Polyethylene)
- PP (Polypropylene)
- PVC (Polyvinyl Chloride) pipes and fittings
- Manufacturing and fitting of bends, tee pieces, y-pieces, and reducers
- We utilize various welding methods, including Butt welding, Electro fusion, Branch, Socket, and Extrusion welding.



MLCO Trading Limited serves as the exclusive agent and distributor for two prominent manufacturers of HDPE Pipes in South Africa. We supply SABS / ISO approved HDPE and PVC plastic pipes and distribute the full range of HDPE fittings and valves.

We provide HDPE pipes and fabricated fittings that meet all PE dimension tolerances.

MLCO Trading Ltd prioritizes delivering services that meet our clients' highest expectations. We specialize in thermoplastic welding and the installation of a diverse range of high-performance plastic pipes.

## **Some of our services include:**

- Installation of pipelines and fittings (above and underground).
- Production of steel saddles.
- Maintenance of pipes, fittings, tanks, and linings.
- Providers of galvanized HDPE, steel, and PVC flanges.
- Contractors specializing in civil engineering and horizontal drilling.
- Advisory Solutions.
- The extensive array of products addresses applications across these market sectors.







# Electrical Dol, Soft Starter, Star Delta Starters & Panel Boxes



We hold an extensive range of mining electrical boxes, consumables, starters

## Types:

- *Electrical Boxes – DOL Starter's; 250A Jumbo Boxes, Sister Boxes, Mother Boxes*
- *Emergency cut-off Switches; Float Switches*
- *Electrical Cables; Cleaners*
- *Steel Compression Glands and Shrouds*
- *Mechanical Compression Glands and Shrouds*
- *Fan Starters; Pump Starter Panels*



## Features:

High Quality Components

- *Available in IP54 Electrical Box*

# Safety / Rockfall protection netting

MLCO Trading Limited is a distributor of quality reinforced Safety Nets which have been SABS approved.

## Specifications:

Polyethylene braid, 6mm in diameter- breaking strength of 400kg.  
Reinforcement

- ❖ 10mm Polypropylene rope surround- breaking strength of 704kg.
- ❖ 10mm Polypropylene rope across from corner to corner.
- ❖ 10mm Polypropylene rope along the length, in the Centre of the net.
- ❖ 10mm Polypropylene rope along the width of the net



## Carbine Hooks

140 x 12mm carbine snap hooks with inserts:

- 1.5m x 1.5m = 8 carbine snap hooks
- 1.8m x 1.8m = 8 carbine snap hooks
- 4.0m x 3.0m = 12 carbine snap hooks
- 3.0m x 1.2m = 8 carbine snap hooks





# Plasson compression fittings

Plasson Mechanical Compression PP fittings offer solutions for connecting PE pipes, used for conveying water and other fluids in urban and inter urban

infrastructure, industrial, mining, landscape and farming applications.

Plasson Mechanical Compression Fittings are designed to withstand working pressures of up to 16bar, and also include valves which allow the regulation of flow.

These fittings are manufactured in diameters ranging from 16mm to 160mm

The Plass4 universal pipe fitting allows connections to all approved pipe types of all pipe materials within the tolerance of the fitting.



# Hydraulic Consumables

We offer high quality, high specification hydraulic hoses and fittings. High pressure, up to 200 Bar working pressure, sustainable replacements for underground trackless



## Features:

- 2 Wire N/Skive Collars
- JIC hose ends
- Wire Reinforced Hose



# Alvenius pipes, couplings and fittings

*Alvenius Pipes'* official Zambian agent, MLCO Trading Ltd., stocks all steel diameters and lengths.

With 50 years of experience, *Alvenius* is one of the leading steel pipe system manufacturers for mining, civil engineering, and industry, offering quality temporary and permanent hot-dipped galvanized pipe systems.

Every pipeline is meticulously tested with X-Ray Control, visual inspection, and hydrostatic testing at 1.5 times operational pressure.

Lloyds Register certifies our ISO 9001 quality management system.



## Features

- Economical and easy to assemble,
- Galvanized finish
- Flexible,
- Versatile design supports both K10 and Victaulic couplings, making it ideal for efficient, modern







# Prefabricated Buildings

## Design, supply and construct

MLCO Trading Limited has a team of personnel in Kitwe Zambia which construct prefabricated buildings. We can provide the design with detailed drawings, supply and construct buildings to your requirements.

- o Mining Offices
- o Supply Offices
- o Safety Schools
- o Accommodation
- o Ablution Blocks
- o Dining / Canteens

## Advantages:

- o Quick Construction
- o Low Maintenance
- o Affordable
- o Efficient

## Chibuluma Mines PLC

- o Supply Office
- o Training Office
- o Mining Office & Control Rooms
- o Met Laboratory
- o Community School





# Pressure Equivalent Tables

PSI	BAR	KPa	MPa
1	0,06	6,89	0,006
5	0,34	31,48	0,034
10	0,68	68,96	0,068
20	1,37	137,9	0,137
30	2,06	206,8	0,206
50	3,44	344,8	0,344
75	5,17	517,2	0,517
100	6,89	689,6	0,689
125	8,62	862	0,862
150	10,34	1034	1,034
175	12,06	1206	1,206
200	13,79	1379	1,379
250	17,24	1724	1,7214
300	20,68	2068	2,068
350	24,13	2413	2,413
400	27,58	2758	2,758
450	31,03	3103	3,103
500	34,48	3448	3,448
550	37,93	3793	3,793
600	41,37	4137	4,137
650	44,82	4482	4,482
700	48,27	4827	4,827
750	51,72	5172	5,172
800	55,17	5517	5,517
850	58,62	5862	5,862
900	62,06	6206	6,206
950	65,51	6551	6,551
1000	68,96	6896	6,896
1100	75,86	7586	7,586
1200	82,75	8275	8,275
1300	89,65	8965	8,965
1400	96,55	9655	9,655
1500	103,4	10344	10,34
1600	110,34	11034	11,034
1700	117,24	11724	11,724
1800	124,13	12413	12,413
1900	131,03	13103	13,103
2000	137,9	13793	13,79
2100	144,8	14482	14,48
2200	151,72	15172	15,172
2300	158,6	15862	15,86
2400	165,51	16551	16,551
2500	172,41	17241	17,241

PSI	BAR	KPa	MPa
2600	179,1	17931	17,93
2700	186,2	1862	18,62
2800	193,1	19310	19,31
2900	199,9	1999	19,99
3000	206,8	2068	20,68
3100	213,7	2137	21,37
3200	220,6	2206	22,06
3300	227,5	2275	22,75
3400	234,4	2344	23,44
3500	241,3	2413	24,13
3600	248,3	2482	24,82
3700	255,1	255,1	25,51
3800	262,0	2620	26,20
3900	268,9	2689	26,89
4000	275,8	2758	27,58
4100	282,7	2827	28,27
4200	289,6	2896	28,96
4300	296,5	2965	29,65
4400	303,4	3034	30,24
4500	310,3	3103	31,03
4600	317,2	3172	31,72
4700	324,1	3241	32,41
4800	331,0	3310	33,10
4900	337,9	3379	33,79
5000	344,8	3448	34,48
5100	351,7	3517	35,17
5200	358,6	3586	35,86
5300	365,5	3655	36,55
5400	372,4	3724	37,24
5500	379,3	3793	37,93
5600	386,2	3862	38,62
5700	393,1	3931	39,31
5800	399,9	3999	39,99
5900	406,8	4068	40,68
6000	413,7	4137	41,37
6500	448,2	4482	44,82
7000	482,7	4827	48,27
7500	517,2	5172	51,72
8000	551,7	5517	55,17
8500	586,2	5862	58,62
9000	620,6	6206	62,06
9500	655,1	6551	65,51
1000	689,6	6896	68,96





# Measurement Equivalent Tables

INCHES	FEET	MM	METRES
1	0,08333	25,4	0,0254
2	0,16667	50,8	0,0508
3	0,24999	76,2	0,0762
4	0,33333	101,6	0,1016
5	0,41667	127	0,127
6	0,49999	152,4	0,1524
7	0,58333	177,8	0,1778
8	0,66666	203,2	0,2032
9	0,74999	228,6	0,2286
10	0,83333	254	0,254
11	0,91666	279,4	0,2794
12	0,99999	304,8	0,3048
13	103,329	330,2	0,3302
14	116,666	355,6	0,3556
15	124999	381	0,381
16	133333	406,4	0,4064
17	141666	431,8	0,4318
18	149999	457,2	0,4572
19	158332	482,6	0,4826
20	166667	508	0,508
21	174999	533,4	0,5334
22	183332	558,8	0,5588
23	191666	584,2	0,5842
24	199999	609,6	0,6096
25	208332	635	0,635
26	216666	660,4	0,6604
27	224999	685,8	0,6858
28	233333	711,2	0,7112
29	241665	736,6	0,7366
30	249999	762	0,762
35	291666	889	0,889
40	333,333	1016	1,016
45	3749985	1143	1,143
50	416666	1270	1,270
55	458331	1397	1,397
60	499998	1524	1,524



# Corporate Social Responsibility of MLCO Trading Ltd

MLCO Trading Ltd. knows our role in mining goes beyond equipment and logistics. We base our company philosophy on Corporate Social Responsibility (CSR). Given our resource-intensive industry, we appreciate the necessity of giving back to our communities. Our CSR initiatives empower local communities, promote sustainability, and encourage long-term growth in industrialized areas.

Our CSR goal is to assist community-driven education, health, and youth empowerment activities. MLCO collaborates with local leaders and groups to identify needs and build lasting programs. We believe that investing in people is as vital as infrastructure, and we want to help communities thrive.



MLCO Trading Ltd. also wants to develop talent and solidarity via sports. We understand how sports build discipline, teamwork, and community. As part of our CSR approach, we sponsor local sports clubs and youth athletic events to give kids safe, structured places to grow, compete, and thrive. These projects invest in sports' future and promote social inclusion and mental health.



*Above are some examples of Brands We've Proudly Supported Through Our Work and Partnership over the years*



MLCO Trading Ltd also extends its Corporate Social Responsibility efforts to the welfare of domesticated animals. We believe that a compassionate society includes how we care for the animals that share our homes and communities. As part of our community outreach, we support local animal shelters, pet vaccination drives, and awareness campaigns that encourage responsible pet ownership. We also partner with veterinary clinics and animal rescue groups to assist in providing food, medical care, and shelter for stray or abandoned pets. Our goal is to contribute to healthier, more humane communities where animals are treated with kindness and dignity..

